

Harness the power of NI TestStand quickly and simply with a fully integrated test application development and deployment framework.

Optimal System Requirements:

Microsoft W7
MS SQL Express 2008
TortoiseSVN 1.6
NI TestStand 2010
NI LabVIEW 2009

Licensing options:

- ▶ Development license
- ▶ Test maintenance license
- ▶ Runtime license

About Alfamation

Founded in 1991, our mission at Alfamation is to leverage our scientific passion and knowledge to imagine and create new ways to engineer functional test systems. We do this by challenging the traditional approach to functional test with technology innovations that address the test needs of continually changing markets.

We take an imaginative, passionate, and out-of-the-box approach to creating products and services for design, test, and manufacturing engineers and managers in the automotive, consumer electronics, telecom, and medical industries.

Alfamation is a preferred vendor of test engineers at Fortune 1000 companies and is a leading partner for National Instruments, among a small, exclusive group of global Select Partners.

Benefits and Features:

- ▶ Leverage NI TestStand power with an efficient, user-friendly user experience for your test project.
- ▶ Leverage a process-driven integrated cockpit for rapid application development.
- ▶ Manage test application change history.
- ▶ Easily define and recall, at the user level, process profiles where the test application should be deployed.
- ▶ Easily handle hundreds of product variants through a powerful configuration variant manager.
- ▶ Ensure test stations and test adapters match through a dual segment calibration process.
- ▶ Run multiple executions on a self adapting user interface. The test execution GUI adapts automatically to the number of deployed parallel test instances.
- ▶ Use a powerful SQL Database to immediately view and filter test results and easily interface to MES&PDES.
- ▶ Receive ongoing system health status in conjunction with PXI/PXIe racks system monitor functions.
- ▶ Provide a service -level tools repository and diagnostic test development context
- ▶ Experience a low cost of introduction and ownership.

www.alfamationglobal.com/supernova

supernova

by alfamation

Unleash the Power of NI TestStand

alfamation[™]
IMAGINE A BETTER TEST SOLUTION

www.alfamationglobal.com
info@alfamationglobal.com

© 2010 Alfamation SpA. All rights reserved. Product and company names are trademarks or trade names of their respective companies SuperNova by Alfamation is a trademark of Alfamation SpA. LabVIEW, NI TestStand are trademarks of National Instruments Corp. Alfamation reserves the right to change specification at any time.
2000 620 0039.1 SN

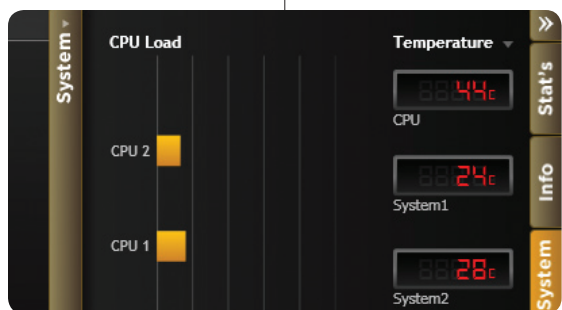


Experience a new era in test development and management with improved efficiency and ease of use throughout the tester lifecycle

The SuperNova Test Application Framework is an innovative, fully integrated test environment that simplifies access to high-end test capabilities, reduces time spent on analysis and customizations, and helps you achieve testing goals with minimal investment.

Through an enriched and powerful user experience, SuperNova unleashes the power of National Instruments TestStand to allow engineers to quickly create and manage test applications from development to manufacturing deployment and service.

SuperNova introduces high level application release management, process, and test project configuration functions to ease application development and management, and is fully internationalized to accommodate world class test requirements.



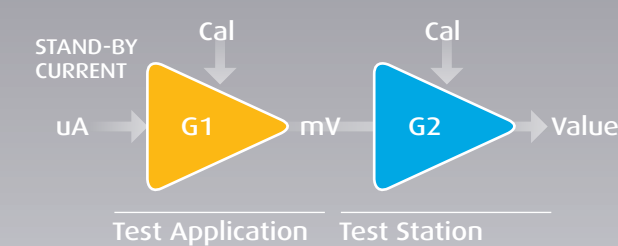
Sequence Name	Name	Default	5000-UK LowRange UK	5000-EU LowRange EU	7000-UK MiddleRange UK	7000-EU MiddleRange EU
Power ON	Power ON DUT	Execute	As Master	As Master	As Master	As Master
Measure current	Measure PowerOn current consumption	Execute	As Master	As Master	As Master	As Master
EOL	Check Current Consumption	Execute	As Master	As Master	As Master	As Master
Check LCD display	Enter EOL Mode	Execute	As Master	As Master	As Master	As Master
Check TFT display	Display Check	Execute	As Master	As Master	As Master	As Master
Check DOT matrix display	Check LCD Display	Execute	As Master	As Master	Skip	Skip
LED test	Check DOT Matrix display	Execute	Skip	Skip	As Master	As Master
Check RPM	Check TFT display	Execute	Skip	Skip	Skip	Skip
Check MPH	LED test	Execute	As Master	As Master	As Master	As Master
Check Fuel	Check LED status and color	Execute	As Master	As Master	Force Pass	Force Fail
Check Temp C	Needle Offset Alignment	Execute	As Master	As Master	As Master	As Master
Check Temp F	Acquire All Needle Images	Execute	As Master	As Master	As Master	As Master
Write EEPROM	Check RPM	Execute	As Master	As Master	As Master	As Master
	Check Speed (MPH)	Execute	Skip	As Master	Skip	As Master
	Check Speed (Mph)	Execute	As Master	Skip	As Master	Skip
	Check Fuel Level	Execute	As Master	As Master	As Master	As Master

FULL PROJECT TRACEABILITY

The SuperNova Test Project domain allows engineers to more rapidly deploy a test application by maintaining all relevant data about the unit under test (UUT) and the test application in one centralized location. The Test Project domain accurately traces and manages all application details, with no risk of lost or missing files.

The SuperNova graphical user interface assists users throughout the test development process by providing:

- ▶ A powerful release management system that allows for transitions from test project releases and change tracking.
- ▶ A fully integrated master sequence editor that harnesses NI TestStand features within an enriched GUI.
- ▶ A powerful variant manager which ensures effortless management of hundreds of product and application variants.
- ▶ Multi-socket signals and commands virtualization that provide a structural solution to develop once and deploy multiple instances.
- ▶ Printing and reporting templates with an integrated WYSIWYG editor to connect directly to the test execution variables.
- ▶ Internationalized messages management that provide multi-language error reporting.
- ▶ A integrated runtime HMI to test drive test projects within target software context prior to final release.

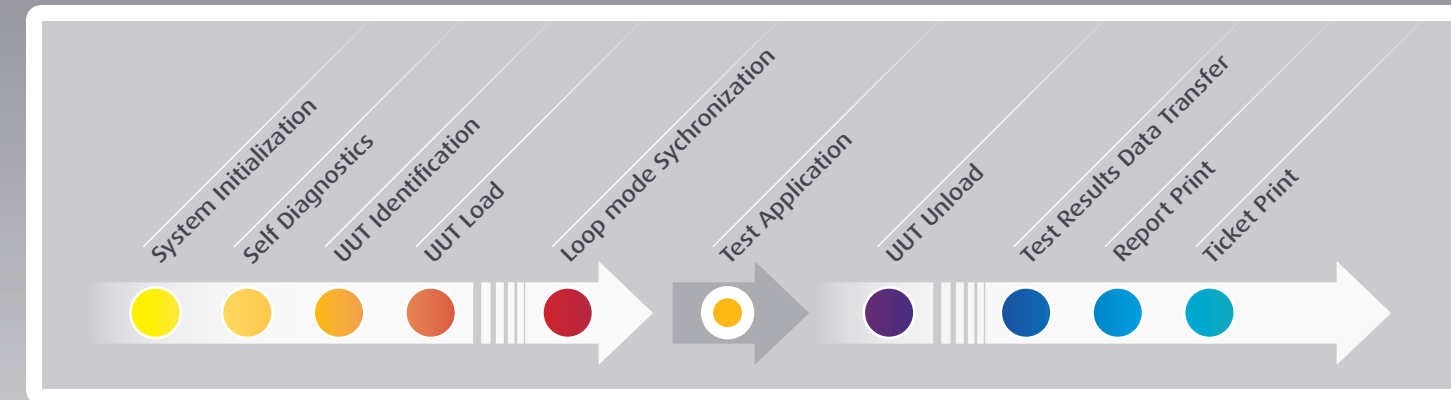


TEST SIGNALS THE EASY WAY

- ▶ Through powerful SuperNova APIs:
 - ▶ The software provides a full visual environment for configuring test signals at both the test station and test adapter sites.
 - ▶ Users can tag signals with meaningful and easy to remember names.
 - ▶ Transparent management of scaling and calibration of test stations and adapter signals occurs outside the test application.
 - ▶ Engineers can easily select plug-ins through open-format transfer and linearization to map physical values.

GOOD COMMUNICATION IS KEY

SuperNova features visualization of communication for easy message management and multi-socket support. Each message or command can be predetermined for each parallel test instance with its own attributes like periodicity, timeout, and expected answer. The message aliases are then made available at the application level through SuperNova APIs. In addition, SuperNova helps manage error codes with associated messages. The message for each code is language-aware. The codes and the messages are visually associated to the test sequence steps through an easy to manage grid format.



EFFICIENTLY DEFINE YOUR TEST PROCESS PROFILE

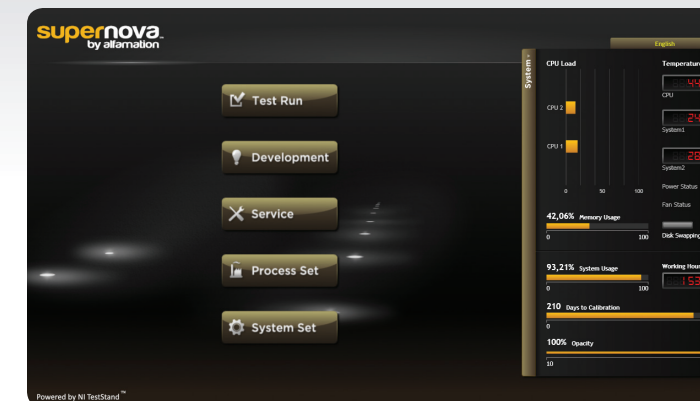
- ▶ SuperNova reduces extensive engineering and process model customizations efforts, providing a high readability level while maintaining the full flexibility of NI TestStand. SuperNova features an independent Test Process configuration domain for easy configuration, customization, and tracking of process-related functions, including:
 - ▶ product & project identification
 - ▶ system and application congruency check
 - ▶ product handling
 - ▶ single/multiple/parallel testing
 - ▶ results transfer and printout
 - ▶ easy MES&PDES interfacing
- With this feature, users can quickly execute the same project on identically configured test equipment with different process profiles (such as in-line automated, off-line manual, cyclic test, and lab development).

NO HASSLE REPORTING

SuperNova stores test results in an SQL database that users can locate either on the automated test equipment or centralized at the enterprise level, allowing for flexible data mining and a web based SPC access option. SuperNova also features a powerful WYSIWYG editor so engineers can design rest labels and printed reports, as well as drag and drop connections to the test application variables.

SYSTEM HEALTH IN REAL TIME

SuperNova provides diagnostics and informational widgets connected to the PXI/PXIe system monitoring functions. These widgets are always available and provide a quick snapshot of system health and usage, overall performance, utilization, and more.



Serial Nr: 00025002
 Date: June 9 2009
 Operator: 23487
 Product Code: 000074135
 Customer Code: 0000135

